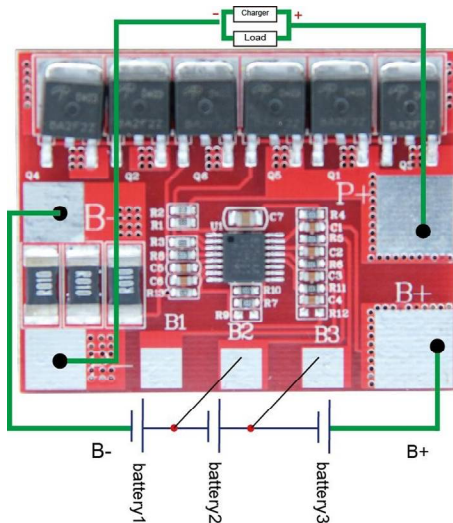


POWER-XTRA

Model : Power-Xtra Li-ion/Li-Po PCM 11.1V (3 Cell) 15A _PX- D113V1 Ver: A0 NO: 900.600.501.095

Item	Contents		Criteria (Adjustable)
1	Model	PCX-D113V1	3S-15A working current
2	Voltage	Charging voltage	12.6V
3	Current	Maximal continuous charging current	15A
		Maximal continuous discharging current	15A
		Current consumption	≤50μA
4	Overcharge Protection	Over charge detection voltage	4.25V±0.025V
		Over charge detection delay time	0.5-2S
		Over charge release voltage	4.10V±0.05V
5	Over Discharge Protection	Over discharge detection voltage	3.00V±0.08V
		Over discharge detection delay time	50-200mS
		Over discharge release voltage	3.20V±0.1V
6	Over Current Protection	Over current detection voltage	0.1V-0.2V
		Over current detection current	40±10A
		Detection delay time	5-20mS
		Release condition	Cut load, automatically recover
7	Short Circuit Protection	Detection condition	Exterior shot circuit
		Detection delay time	200-500uS
		Release condition	Cut load, automatically recover
8	Balance	Balance voltage for single cell	/
		Balance current for single cell	/
9	Resistance	Inner resistance	≤20mΩ
10	Temperature	Operating temperature range	0 - +85°C
		Storage temperature range	0 - +85°C
11	Size (L*W*T)	45mm * 35mm * 3.4mm	



Remarks:

Charge, Discharge at same Port
 P+=B+/Charge+/Discharge+
 P-=Charge-/Discharge-