

SIMPLIFIED SPECIFICATION

Rechargeable Lithium Ion Battery

Model : SPB655060 (2280mAh)

ENER1[®] KOREA. INC.

710-3, Yongtan-Dong , Chung-Ju , Chung-buk , Korea

TEL: 82-43-850-1950 FAX: 82-43-855-9175

www.ener1korea.com

Issued	Checked	Approved
Electronic Approval		

1. Scope

This specification defines the characteristics of a rechargeable lithium ion battery manufactured by **ENER1® KOREA. INC.**

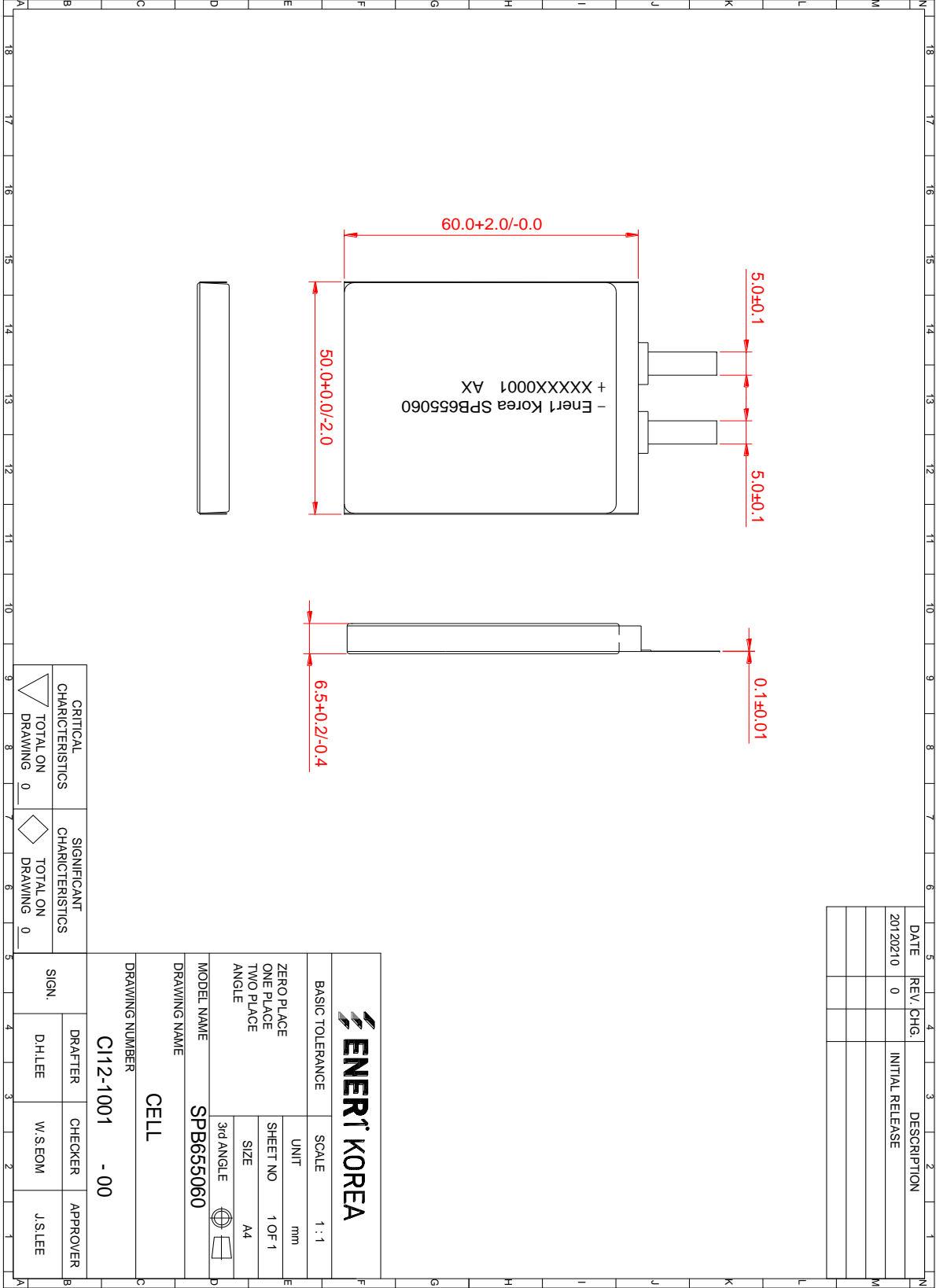
2. Description and Model

- 2.1 Description Cell (Rechargeable Lithium ion Battery)
 2.2 Model SPB655060

3. Nominal Specifications

Item		Specification
3.1 Nominal Capacity		2280 mAh(0.2C discharge)
3.2 Energy density	Volumetric	433 Wh/L
	Gravimetric	201 Wh/Kg
3.3 Nominal Voltage		3.7V
3.4 Operating Voltage Range		3.00V ~ 4.20V
3.5 Standard	Charge Current	1140mA (0.5C)
	Discharge Current	456mA (0.2C)
3.6 Maximum	Charge Current	2280mA (1.0C)
	Discharge Current	4560mA (2.0C)
3.7 Operating Temperature	Charge	0℃ ~ 45℃
	Discharge	-20℃ ~ 60℃
3.8 Storage Temperature	0℃ ~ 25℃	≤ 1 Year
	0℃ ~ 40℃	≤ 3 Month
	-10℃ ~ 50℃	≤ 1 Month
3.9 Storage Humidity		45~85%RH
3.10 Cell size	Thickness	6.5 +0.2/-0.4mm (Initial fully charged Cell)
	Width	50.0 +0.0/-2.0mm
	Length	60.0 +2.0/-0.0mm
3.11 AC Impedance		Max. 25mΩ
3.12 Weight		Max. 42.0g

◆ **Out view drawing for SPB655060**



This drawing is property of Ener1 Korea, Inc. Use or copy of this drawing without proper permission from the appropriate technical-document managing department is prohibited.