

# SIMPLIFIED SPECIFICATION

**Rechargeable Lithium Ion Battery**

**Model : SPB605060 (2000mAh)**

## ENER1<sup>®</sup> KOREA. INC.

710-3, Yongtan-Dong , Chung-Ju , Chung-buk , Korea

TEL: 82-43-850-1950 FAX: 82-43-855-9175

www.ener1korea.com

Issued	Checked	Approved
<div style="border: 2px solid blue; padding: 5px; display: inline-block;"> <b>Electronic Approval</b> </div>		

## 1. Scope

This specification defines the characteristics of a rechargeable lithium ion battery manufactured by **ENER1® KOREA. INC.**

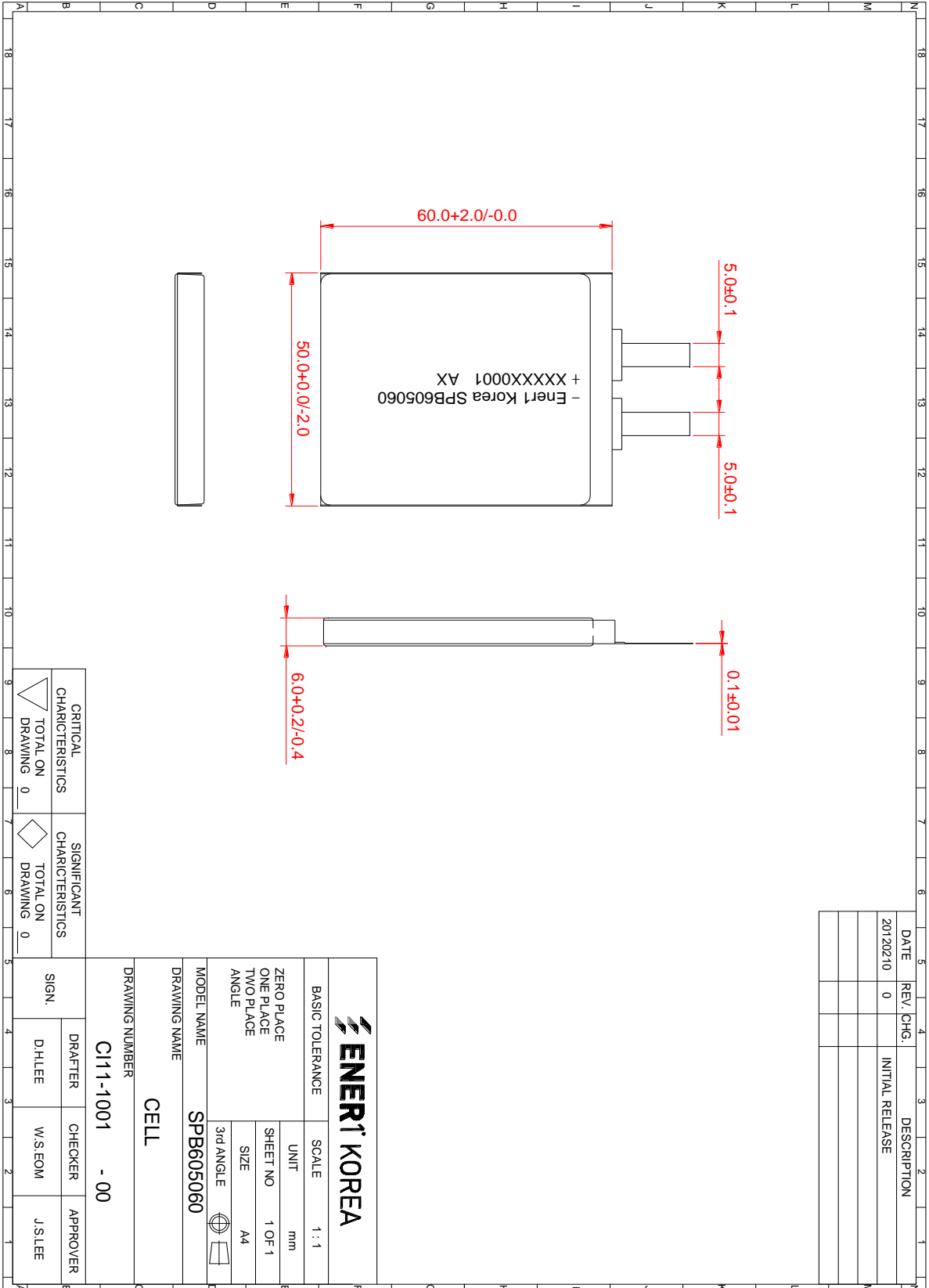
## 2. Description and Model

- 2.1 Description      Cell (Rechargeable Lithium ion Battery )  
 2.2 Model              SPB605060

## 3. Nominal Specifications

Item		Specification
3.1 Nominal Capacity		2000 mAh(0.2C discharge)
3.2 Energy density	Volumetric	411 Wh/L
	Gravimetric	200 Wh/Kg
3.3 Nominal Voltage		3.7V
3.4 Operating Voltage Range		3.00V ~ 4.20V
3.5 Standard	Charge Current	1000mA (0.5C)
	Discharge Current	400mA (0.2C)
3.6 Maximum	Charge Current	2000mA (1.0C)
	Discharge Current	4000mA (2.0C)
3.7 Operating Temperature	Charge	0°C ~ 45°C
	Discharge	-20°C ~ 60°C
3.8 Storage Temperature	0°C ~ 25°C	≤ 1 Year
	0°C ~ 40°C	≤ 3 Month
	-10°C ~ 50°C	≤ 1 Month
3.9 Storage Humidity		45~85%RH
3.10 Cell size	Thickness	6.0 +0.2/-0.4mm (Initial fully charged Cell)
	Width	50.0 +0.0/-2.0mm
	Length	60.0 +2.0/-0.0mm
3.11 AC Impedance		Max. 25mΩ
3.12 Weight		Max. 37.0g

◆ **Out view drawing for SPB605060**



This drawing is property of Ener1 Korea, Inc. Use or copy of this drawing without proper permission from the appropriate technical-document managing department is prohibited.

DATE	REV. CHG.	DESCRIPTION
20120210	0	INITIAL RELEASE

BASIC TOLERANCE	SCALE 1 : 1
ZERO PLACE	UNIT mm
ONE PLACE	SHEET NO 1 OF 1
TWO PLACE	SIZE A4
ANGLE	3rd ANGLE
MODEL NAME	SPB605060
DRAWING NAME	CELL
DRAWING NUMBER	C111-1001 - 00
CRITICAL CHARACTERISTICS	TOTAL ON DRAWING 0
SIGN.	DRAFTER D.H.LEE
	CHECKER W.S.EOM
	APPROVER J.S.LEE